

Softub[®]

PRODUCT KNOWLEDGE



Contents

WHISPER TECHNOLOGY™

POLYBOND™

LEATHERTEX™

SOFT SPARKLE™

CD OZONE

LOCKABLE COVER

24 HOUR CLOCK

SMART CHIP

C E C CERTIFICATE

SAFETY STANDARDS



New 'whisper technology' Hydromate

whisper

technology by softub™

Softub have been the pioneer and is the undisputed industry leader of heat recovery technology for the last 22-years.

Softub utilises patented technology to control and efficiently recover the waste heat that is naturally generated by the motor to heat the Spa to your desired temperature.

Our new Whisper technology motor works totally differently to its predecessor and the process has speeded up the heating time. The Spa water passes directly through the internals of the motor where it is warmed by the heat generated. This design works to not only heat the water but also cool the motor, with a cooler motor running more efficiently. It's brilliant! We basically provide **"FREE"** heat to your Softub.



New Whisper Technology Motor

Benefits of New Whisper Motor

- *Much Quieter. You only hear the water and air flowing when the pump is running.*
- *Minimum 30% quicker heat up time.*
(140) **53%** (220) **57%** (300) **29%**
- *Overall improved electrical efficiency.*
(140) **15%** (220) **11%** (300) **21%**
- *Removal of red hoses eliminates cold temperature service issues*
- *Additional mounting threads and relocated split nuts will eliminate split nut leaks.*
- *No ceramic seals to wear and no bearings to deteriorate eliminating yet another leak / failure point.*

POLYBOND™ CONSTRUCTION

Light weight but very strong, PolyBond is an extremely energy efficient, tough insulating foam. Used throughout the aviation industry for its tough durable qualities, PolyBond is the ideal construction for the portable Softub. Light enough you can pick up and roll around, strong enough you can jump up and down on it. Due to PolyBond's construction properties, it will not degenerate or change shape, giving longevity to the structure of Softub.

Let's also not forget..... it's foam!! So we also have the most comfortable Hot Tub on the market. You sit on foam, you lean against foam and your head rests against foam, making Softub incredibly comfortable and more beneficial for the young and old alike.

Let's also remember, all the Softub's plumbing is concealed within the PolyBond, insulating and supporting all the plumbing, again, adding to its efficiency and reducing the possibilities of the pipe work leaking.



PolyBond™ Foam Ring

LeatherTex™ Vinyl

LeaterTex is a new generation of marine grade vinyl's. Softub have done away with the traditional shinny plastic vinyl's that are still used on all Hot Tub covers, replacing it with a soft stylish leather look and feel vinyl.



Almond



Camel



Mocha

Designed for the marine industry, LeatherTex offers an expensive looking vinyl, suitable for all weather climates. UV stable and frost free, LeatherTex not only comes in traditional colours, Sapphire Blue, Forest Green and Port but now in fashionable earth tones of Mocha, camel and Almond, designed to blend into all garden situations or rooms.



Forest Green



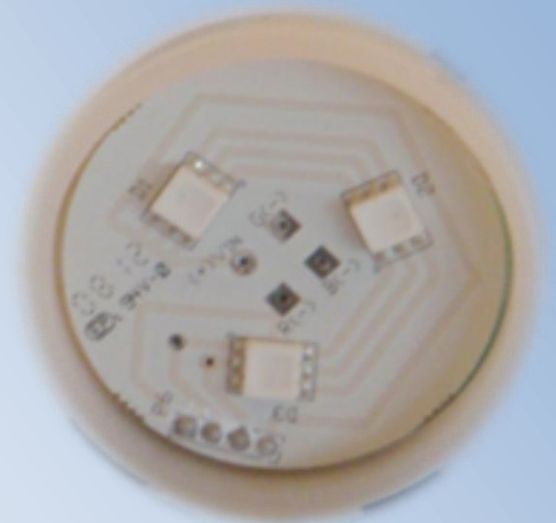
Port



Sapphire Blue

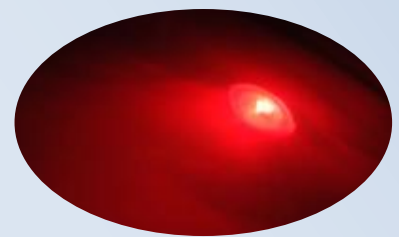
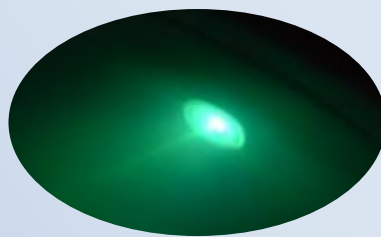
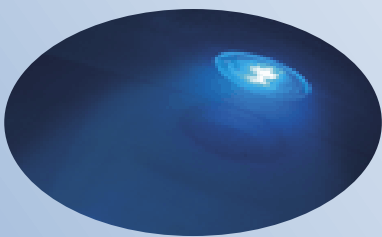
SoftSparkle™ LED Lighting

Softub have incorporated on the T300 & T220 models the latest in LED technology. Gone have the 18 small LED bulbs to be replaced by state of the art Tri-Colour SMT (Surface Mounted Technology).



New SMT Lighting

These 3 ultra thin white emitting blocks produce a brighter light than the original LED lights, offering 10 different sequences, from stand alone Blue, Green, Red and White too different colours merging between themselves.



The lighting is also enhanced in a Softub as the lining is a pale blue and with its round design, light is reflected better.

CD Ozone

The Softub Hydromate is fully equipped with a Patented CD Ozone system to help maintain water quality.

Ozone is automatically introduced into the Spa for the first 15mins of every heat cycle, i.e. when the pump kicks in to re-heat the water.

Additionally, after use (jet button being used), ozone will be introduced for 1 hour on the next heat cycle. Importantly though, if the jet is pressed while you're in the Spa any ozone activity will automatically cease.



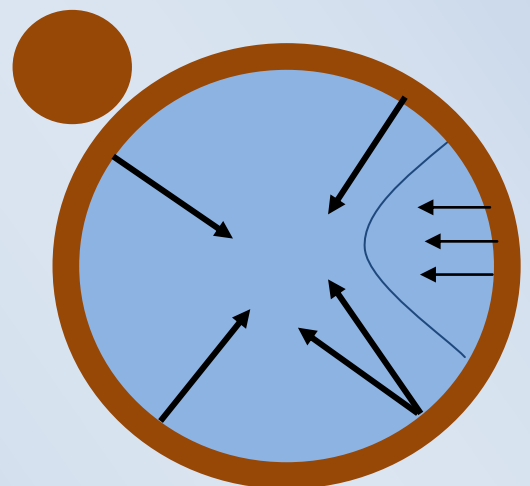
Solenoid Valve

The ozone is controlled by a Patented Solenoid System that automatically opens and closes when required. Due to the fact Softub does NOT have a 24hr system, off gas is greatly reduced, therefore limiting any damage this causes (headrests, jets and cover etc).

Another great plus feature of the Softub system is that ozone itself is distributed through all the jets rather than one dedicated small jet, therefore achieving better penetration of the Spa water from all sides.



DEL ozone generator



Ozone Distribution

LOCKABLE INSULATING COVER

Softub own one of the Spa industries largest cover manufacturers, SunStar. Having all the technology and knowledge at their disposal, Softub have created a very high quality and efficient insulating cover.

The cover is made up from 2 half circle inserts of 2lb density foam, the straight edge of which has a metal strengthening bar built into it. A large central baffle works in together with the two end wing baffles to improve overall insulation.



Insulation Baffles



Inner Cover Seal

To improve heat loss further Softub have added a grey rubber seal that sits on the inside edge of the Spa, once again reducing heat loss.

On a safety note Softub have incorporated four large locking points. 2 heavy duty webbing straps that are positioned under the Spa clip into a changeable combination lock.



Combination Lock

24 Hour Clock

Softub's intelligent top controls have a built-in 24hr clock system designed so your Hydromate does not kick in throughout the night if that is your desire.

There is no actual clock but a 24hr cycle built-in to the P C Board. Setting the clock is simple by just pressing the + & **Light** button together for 20 second (+ & **Reset** on T140 Sportster) and wait for 24 to appear in the red temperature panel. If you press the buttons at 11.38am, the 24hr clock will be activated at that time.



24 being displayed

By setting the clock at 11.38am the motor will begin at this time to heat the water to the set temperature. Once it has reached this temperature the Softub will turn off and WILL NOT kick in again till the next morning at 11.38am. This will mean that the Spa will not call for heat, even if it drops below the set temperature.

You can still use the Spa in the normal way by pressing the Jets button. The only difference is that if the temperature drops while you are in, or after use, the motor will not kick in for a heat call until the next 11.38am.

To change the time simply re-set by pressing + & Light or to wipe clean without the clock unplug from the electrics for 5 mins.

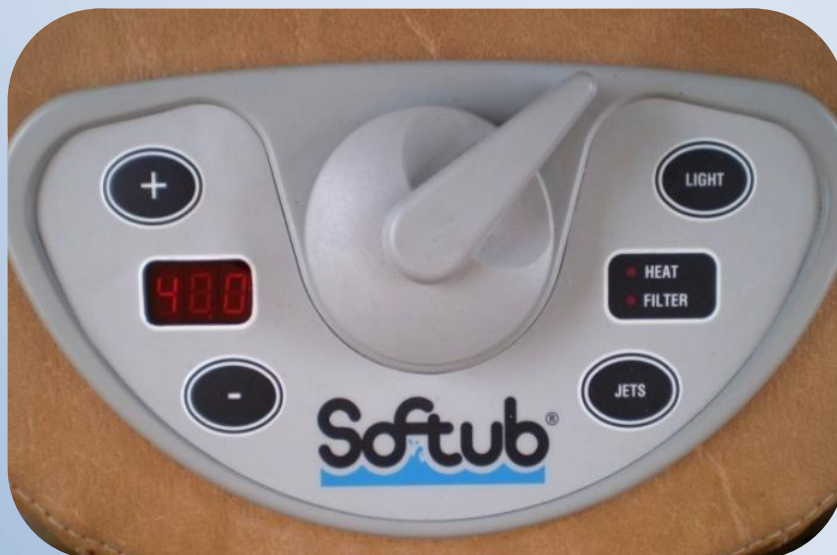
Even with the new Whisper Technology motor, this is a great feature for anyone placing the Softub indoors or right next to the house with windows open.

Smart Chip™

Softub's intelligent Hydromate also houses 'Smart Chip', a clever device that recognises low power situations and shuts off before the any damage can be caused to the Softub.

We the voltages drops, Softub will automatically shut down completely, and when the voltage returns to the correct level, Smart Chip turns everything back on the your old settings.

Smart Chip is a built-in safety device to protect your Softub from accidental electrical damage.

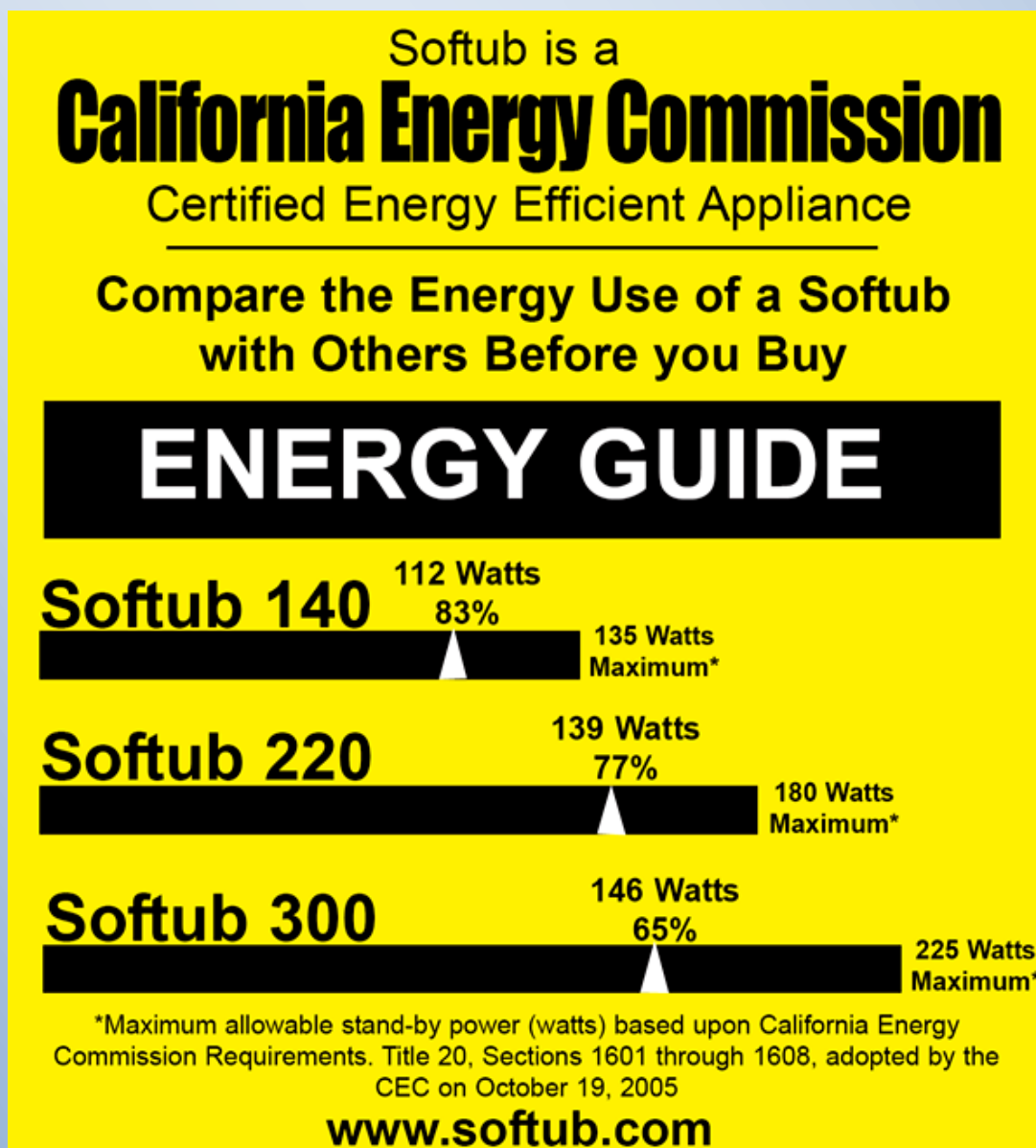


Softub controls, containing Smart Chip™

Californian Energy Commission

All models currently manufactured by Softub have been tested in accordance with all applicable requirements and met the stringent Appliance Efficiency Regulations as set forth by the Californian Energy Commission.

No product modifications were needed to meet the requirements and all the models passed with flying colours.



Certificate issued by the Californian Energy Commission

SOFTUB SAFETY STANDARDS



All of our export tubs (220 volt, 50 Hz) are built to meet or exceed the UL-1563: Electric Spas, Equipment Assemblies and Associated Equipment standard, which is the applicable standard for our products. We are certified by ETL and our control numbers are 59987 for our Valencia, CA manufacturing facility and 3037126 for our New Bedford, MA facility.



All of our export tubs (240 volt, 50 Hz) are built to meet or exceed all of the applicable standards for the European Union. For this reason, we apply the CE certification label, which is a self-certification.



All of our export tubs (240 volt, 50 Hz) are built to meet or exceed the requirements of the CB scheme in accordance with the IEC standards, the applicable EMC standards and the GS standards of EN 60335-1:91 + 1:94 + A11:95 + A1:96 + A12:96, EN 60355-2-60:97, DIN EN 292-2:91 + A1:95, EN 27779:91, EN 50366:2003 +A1:2006 & DIN EN ISO 12100-2:2004. We are certified by Nemko and our report number is 79992.

All of our tubs are also manufactured in accordance with ANSI/NSPI-6 1999: American National Standard for Portable Spas.



Additionally, we also test our suction systems to ANSI/APSP -7: American National Standard for Suction Entrapment Avoidance in Swimming Pools, Wading Pools, Spas, Hot Tubs and Catch Basins. We meet or exceed the requirements of the standard.



All of our covers meet or exceed ASTM F 1346-91: Standard Performance Specification for Safety Covers and Labelling Requirements for all Covers for Swimming Pools, Spas and Hot Tubs.